



**Océ**  
 CS2124  
 CS2136  
 CS2136MF



Bring your  
 ideas to life



### Wide format colour systems to maximise your design assets

These economic devices are the fast, easy way to get your plans and technical information on paper. Whether it's engineering designs and drawings, architectural plans or GIS plots, you'll see the difference in sharpness and clarity. You can choose from printing widths of 24 or 36 inches, or a multifunctional for quick, convenient copying and scanning of hard copy drawings. Each one will maximise the results of your design assets.

	Océ CS2136 printer	Océ CS2124 printer
Technology	Thermal inkjet	Thermal inkjet
Print head	Integrated semi permanent 15360 nozzles	Integrated semi permanent 15360 nozzles
4 colours	Cyan, magenta, yellow, black	Cyan, magenta, yellow, black
5 inks	Océ large colour gamut dye ink: cyan, magenta, yellow, black Océ high density pigment ink: black	Océ large colour gamut dye ink: cyan, magenta, yellow, black Océ high density pigment ink: black
Max. printing resolution	2400x1200 dpi	2400x1200 dpi
Size of ink tanks*	130 ml per colour (2 x high density black)	130 ml per colour (2 x high density black)
Ink level monitoring	Ink level indication Out of ink notice	Ink level indication Out of ink notice

Colour modes	Colour, B&W/Grey scale	Colour, B&W/Grey scale
Quality modes	Draft, standard, high, highest	Draft, standard, high, highest
Printing speed	Max. 1.2 min per A0	Max. 0.6 min per A1
Stand	Included	Included
Standard interface	Network board (10BaseT/100BaseTX) USB 2.0	Network board (10BaseT/100BaseTX) USB 2.0
Standard accessory	1 printhead 6 ink tanks (cyan, magenta, yellow, black, 2 x high density black) 1 roll holder 2 inch 1 cutter 1 maintenance cartridge Power cable 1 roll Océ premium paper	1 printhead 6 ink tanks (cyan, magenta, yellow, black, 2 x high density black) 1 roll holder 2 inch 1 cutter 1 maintenance cartridge Power cable 1 roll Océ premium paper
Installation	User installable, installation guide and tools included	User installable, installation guide and tools included
Options	Additional 2 inch roll holder	Additional 2 inch roll holder
		
Media source	Media 1 roll Single sheet	Media 1 roll Sheet cassette
Media core size	2 inch	2 inch
Media thickness	0.07-0.8 mm	0.07-0.8 mm
Media types	Uncoated Coated Transparent paper Polyester film Glossy photo paper Satin photo paper	Uncoated Coated Transparent paper Polyester film Glossy photo paper Satin photo paper

<b>Media sizes roll</b>	<i>max</i> <i>min</i>	<i>max</i> <i>min</i>
Width	917 mm	203 mm
Length	18000 mm	203 mm
<b>Media sizes cut sheet</b>	<i>max</i> <i>min</i>	<i>Cassette: max</i> <i>min</i>
Width	917 mm	432 mm
Length	1600 mm	594 mm
		<i>Manual: max</i> <i>min</i>
		610 mm      203 mm
		1600 mm      279 mm
<b>Cassette capacity</b>		Uncoated paper: 250 sheets A4
<b>Width detection</b>	Automatic	Automatic
<b>Roll length detection</b>	Remaining amount detection	Remaining amount detection
<b>Drawing margin roll</b>	Leading & trailing: 3 mm Left & right side: 3 mm	Leading & trailing: 3 mm Left & right side: 3 mm
<b>Drawing margin cut sheet</b>	Leading: 3 mm Trailing: 23 mm Left & right side: 3 mm	Leading: 3 mm Trailing: 23 mm Left & right side: 3 mm
<b>Borderless printing</b>	For roll media: photo and heavy coated paper Margin leading & trailing: 0 mm Margin left & right side: 0 mm Supported width: 10 - 36 inch, A4 - A0, B4 - B1	For roll media: photo and heavy paper Margin leading & trailing: 0 mm Margin left & right side: 0 mm Supported width: 10 - 24 inch, A3 - A1, B4 - B2
<b>Maximum roll length</b>	120 m and outer roll diameter < 150 mm	120 m and outer roll diameter < 150 mm



<b>Dimensions printer with stand</b>	<b>Environment</b> 1507 (W) x 871 (D) x 1094 (H) mm	<b>Environment</b> 999 (W) x 981 (D) x 990 (H) mm
<b>Weight printer with stand</b>	Approx. 63 kg	Approx. 72 kg
<b>Electrical requirements</b>	100 - 240 V AC (50/60 Hz)	AC: 100 - 120 V AC (50/60 Hz), 220 - 240V AC (50/60 Hz)

---

## Power consumption

Operation: 140 W or less  
Sleep mode: 100-115V: 5W or less  
Sleep mode: 220-240V: 6W or less

Operation: 100 W or less  
Sleep mode: 100-115V: 6W or less  
Sleep mode: 220-240V: 7W or less

---

## Noise

Standby: 35 dB or less  
Operation: 54 dB or less

Standby: 35 dB or less  
Operation: 53 dB or less

---

## Safety approvals

UL, CE, TUV, CB certification  
FCC, IC, VCCI

UL, CE, TUV, CB certification  
FCC, IC, VCCI

---

## Others

Energy Star, ROHS, WEEE

Energy Star, ROHS, WEEE

---

## Driver

### Drivers and RIPs

Windows 2000, Windows XP,  
Windows Server 2003

### Drivers & RIPs

Windows 2000, Windows XP,  
Windows Server 2003

---

## Automated printing process

Océ Predefined Settings:  
– media  
– print mode  
– colour  
– automatic loading of Océ media profile

Océ Predefined Settings:  
– media  
– print mode  
– colour  
– automatic loading of Océ media profile

---

## Back channel communication via the driver & Internet browser

View job status  
View queue  
View ink level  
View waste ink level

View job status  
View queue  
View ink level  
View waste ink level

---

## Optional RIPs

Onyx CADPro  
Onyx GraphicsPro  
*\* start ink tank 90 ml*

Onyx CADPro  
Onyx GraphicsPro

---

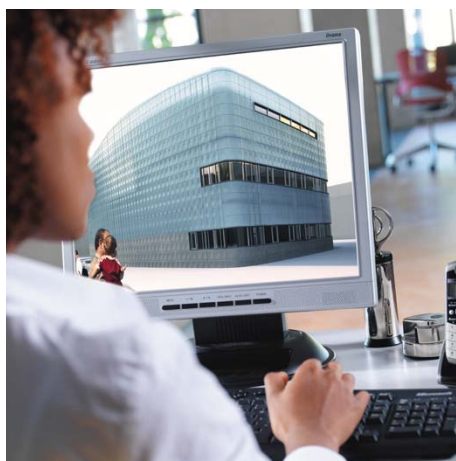
## Onyx GraphicsPro

adds the ability to output PostScript and raster files directly on the printer. And includes PostScript driver for printing from Windows or MAC OS applications

---

## Onyx CADPro

adds the ability to output HPGL, HPGL/2 and HPRTL drawings directly on the printer



---

## Supported vector files

HPGL/2 , HPGL, HPRTL

HPGL/2 , HPGL, HPRTL

---

## Supported raster files

TIFF/TIFF-IT/8&16 Bit TIFF/JPEG2000/  
JPEG/Native Photoshop/Kodak PhotoCD/  
ER Mapper/MrSID/Targa/Scitex CT/DIB/  
GIF/PCX/BMP

TIFF/TIFF-IT/8&16 Bit TIFF/JPEG2000/  
JPEG/Native Photoshop/Kodak PhotoCD/  
ER Mapper/MrSID/Targa/Scitex CT/DIB/  
GIF/PCX/BMP

Supported PostScript files	PS & EPS level 2&3/PDF/DCS 4 and 6-colour separations	
Drivers Windows	Adobe PS 2&3 for applications under Windows 2000/XP/2003 Server	
Drivers Mac OS	Adobe PS 2&3 for applications under Mac OS	
Supported font types in PostScript	PostScript 1 & 4, True Type, Multiple Master Type 1, CID, Kanji, Morisawa	
Installation	User installable: <ul style="list-style-type: none"> <li>- Quick start installation guide</li> <li>- Creates automatically short cuts to Hot Folders on 1 desktop</li> <li>- Includes standard 6 Quick Sets (predefined print and colour settings)</li> <li>- Installs virtual PostScript printer automatically</li> </ul>	User installable: <ul style="list-style-type: none"> <li>- Quick start installation guide</li> <li>- Creates automatically short cuts to Hot Folders on 1 desktop</li> <li>- Includes standard 6 Quick Sets (predefined print and colour settings)</li> </ul>
Clear intuitive user interface	Yes, no training needed	Yes, no training needed
Automated printing process	Yes <ul style="list-style-type: none"> <li>- Standard 6 Quick Sets: predefined print and colour settings</li> <li>- Hot Folders: files dropped in the Hot Folders will be processed and printed automatically</li> </ul>	Yes <ul style="list-style-type: none"> <li>- Standard 6 Quick Sets: predefined print settings</li> <li>- Standard Hot Folders: files dropped in the Hot Folders will be processed and printed automatically</li> </ul>
Automated printing process via remote workstations	Yes, via shortcut to Hot Folders	Yes, via shortcut to Hot Folders
Manually open files when needed	Yes	Yes
Edit line thickness and colour for each HPGL pen	Yes	Yes
Customize HPGL/HPGL2 settings	Yes	Yes
Print directly from PC and MAC creative application	Yes, via Hot Folders and PostScript driver	Yes, via Hot Folders
Autoscale and autorotate images	Yes	Yes
Print queue for print jobs	Yes	Yes
Save and archive jobs	Yes	Yes
Print from history queue	Yes	Yes
Change job settings of history	Magnification	
Automatic media save/nesting	Yes	Yes
Image interpolation	Yes	Yes

Job log and media usage reporting	Yes	Yes
Active printers (#)	Standard 2, up to 5	Standard 2, up to 5
Thumbnail job preview	Yes	Yes
Spot colour matching	Yes	
Pantone colour library	Yes	
ICC compliant	Yes	Yes
Océ media profile	Yes, 27	Yes, 27
Upgrade path	Basic printer to GraphicsPro CADPro to GraphicsPro	Basic printer to CADPro CADPro to GraphicsPro
<b>Operating systems</b>	<b>Minimum system requirement</b> Windows XP Pro with latest service pack	<b>Minimum system requirement</b> Windows XP Pro with latest service pack
<b>CPU</b>	Intel Pentium III 1.5 Ghz or higher/Athlon	Intel Pentium III 1.5 Ghz or higher/Athlon
<b>Storage</b>	40 Gb hard drive 1 Gb RAM	40 Gb hard drive 1 Gb RAM
<b>Video Display</b>	1280x1024 16-bit colour	1280x1024 16-bit colour
<b>USB</b>	One port required for Security Key	One port required for Security Key
<b>DVD-ROM</b>	required	required
<b>System configuration</b>	<b>Océ CS2136MF for colour printing, copying and scanning</b> Océ CS2136 printer Océ CS4136 colour scanner Océ Copy Easy, colour copying and Scanning software	
<b>Installation</b>	User installable, customer support guide included	

#### Océ CS4136 colour scanner



<b>Camera technology</b>	Triple 4-linear CCDs (RGB triplets + Panchromatic B/W) 7700 pixels per camera 48 bit colour data capture 16 bit graytone data capture
--------------------------	--

Resolution	Optical: 508 dpi Enhanced: 1200 dpi Stepsize: 1 dpi
Number of cameras	3
Scan accuracy	0.1% +/- 1 pixel
Scan speed	200 dpi, 24 bit full colour: 0.9 m/min
Scan width	Max. 914 mm
Original width	Max. 1118 mm
Original thickness	Max. 15 mm
Original feed	Face down Automatic width detection
Standard interface	FireWire USB 2.0
Electrical requirements	110/220/240V (50/60 Hz)
Power consumption	180 W
Dimensions without stand	1342 x 185 x 465 mm
Weight without stand	57 kg

### Océ Copy Easy colour copying and scan to file software



### Copy features

Direct ready for copying

Automatic scanner detection  
No close loop calibration required,  
Scanners, media and printer precalibrated

Green button colour copying

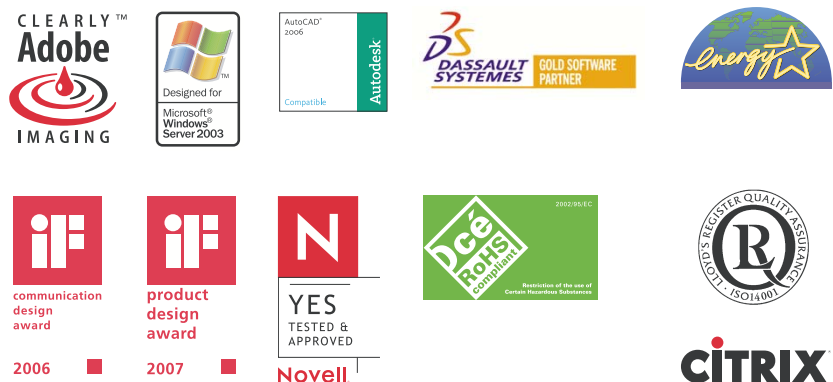
Automatic printer media type detection  
Automatic printer media width detection  
Standard copy profiles for 16 Océ media  
Standard image enhancement for 5 original types

Original size detection

Automatic or manual

Instant copying	Printing while scanning (set original size manually)
Preview	Preview original Preview effect of original enhancement Preview position on roll media Zoom in/out
Copy area of interest	Select copy area with mouse
Simple nesting	Nest multiple copy of same scan
De-skew original	Automatic de-skew original
Original rewind	Configurable
<b>Scanning features</b>	
Green button colour scanning	Standard image enhancement for 5 original types Automatic file name increment
Supported file formats	BMP, EPS, GIF, HPR, HP-RTL, IFF, JPEG, J2K JPEG2000, PCX, PDF, PDF/A, PNG, PPM, TGA, TIFF, 6RN
<b>General</b>	
Operating systems	Windows 2000, Windows XP
Minimum platform	Intel Pentium IV 2.66 GHz/Atlon, 60 GB hard drive, 1 Gb RAM, Network board 100BaseT
Protection	USB dongle with software key-code
Zooming	1-1000%

## Océ Wide Format Printing Systems Partners and Awards



**Printing for Professionals**

For information and services, visit us at [www.oce.com](http://www.oce.com)

© 2007 Océ. Illustrations and specifications do not necessarily apply to products and services offered in each local market. Technical specifications are subject to change without prior notice. All other trademarks are the property of their respective owners.